

BRAIN CANCER FACT SHEET

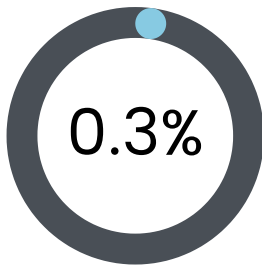
The brain, spinal cord, and nerves make up the central nervous system. Primary brain tumors start in the brain and may be cancerous or non-cancerous. Primary brain tumors may spread within the brain or the spine.

There is currently **no screening** for early detection for brain cancer.

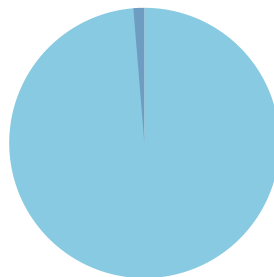
There are over **120**

types of primary brain tumors, some being cancerous and others non-cancerous.

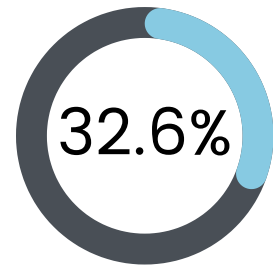
- Brain cancer is the most common solid tumor in children.
- Glioblastoma is the most aggressive brain cancer in adults.



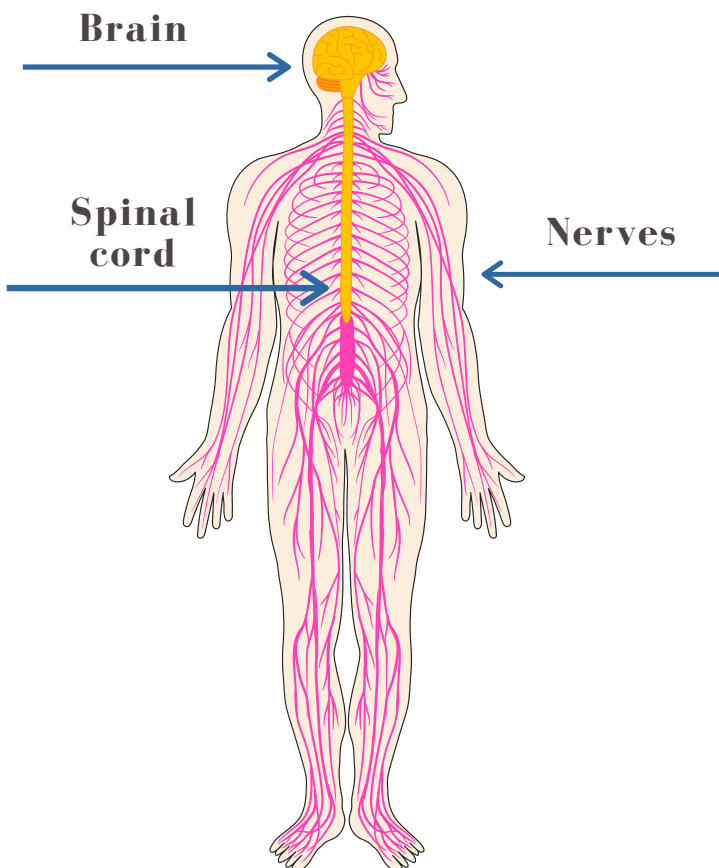
0.3% of men and women will be diagnosed sometime during their lifetime.



Brain cancer represents 1.4% of all new cancer cases in the U.S.



Brain cancer in adults has a 32.6% 5-year relative survival rate.



Common Cancer Types

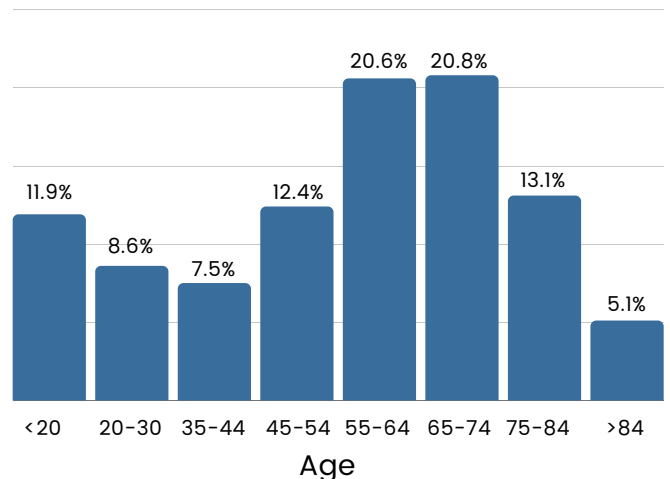
In children

- Malignant pilocytic astrocytoma
- Medulloblastoma
- Malignant glioma

In adults

- Glioblastoma

Percent of Cases By Age Group



Sources: Hawai'i Cancer at a Glance, University of Hawai'i Cancer Center, National Cancer Institute, American Brain Tumor Association

For more information, visit: <https://www.cancer.gov/types/brain>

May 2021



UNIVERSITY OF HAWAII
CANCER CENTER

50 Years of Progress